



MÚUYAL

HOUSE 2



AHIMSA

TULUM, QUINTANA ROO, MEXICO



A H I M S A



XANBEL

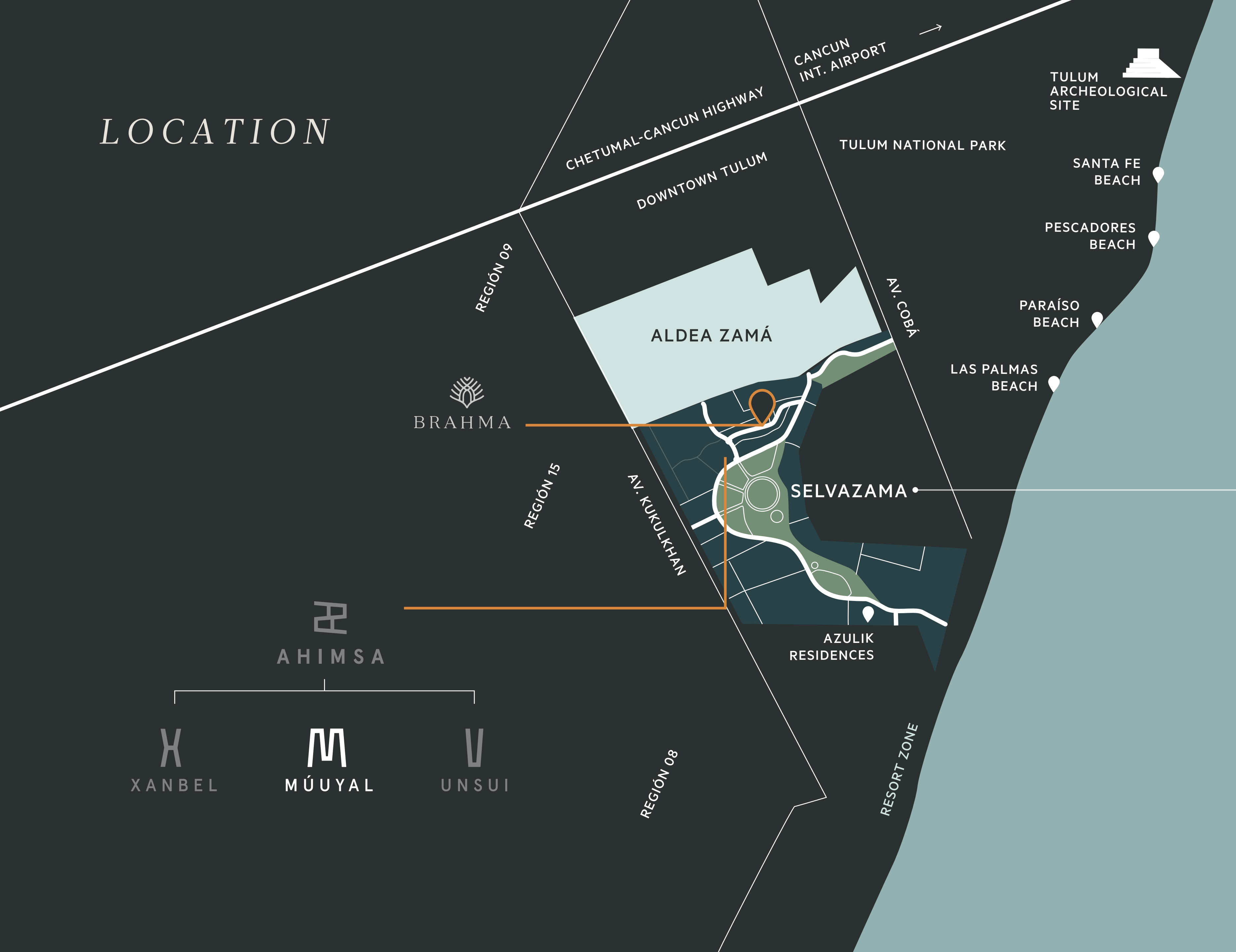


MÚUYAL



UNSUI

LOCATION



- ALDEA PREMIUM
- PASEO KUKULKAN
- AHIMSA RESIDENCIAL
- BALAM HO
- FORBES SUITES
- DHARMA RESIDENCIAL
- GREEN VILLAGE
- GREEN SCHOOL
- ART PARK
- AMIRA DISTRICT
- HOTEL Y RESIDENCIAS
- IO TULUM



M
MÚUYAL

TULUM

RESIDENTIAL

MÚUYAL MEANS *CLOUD* IN MAYAN: A NATURAL SYMBOL OF TRANSFORMATION AND ADAPTABILITY.

Múuyal is a collection of fully equipped homes with state-of-the-art amenities in the most exclusive area of Tulum. Selvazama has everything you need to live surrounded by nature without sacrificing comfort: paved roads, sewage, water treatment, electricity, and the beach just a quick bike ride away. It is also home to Green School, an educational project with an ecological model that draws like-minded families worldwide.

We offer the ideal environment for those who care about the planet's future, especially for young families seeking a sustainable lifestyle and a conscious, safe, multicultural community for their children to grow in.

Tulum has become one of Mexico's top investment hubs due to its low risk and constant appreciation. People worldwide are making their home in this Caribbean paradise for its rapid growth, unique beauty, and quality of life.

Múuyal is the name Mayans give to clouds. The project stems from a balance between mind and body, striving to connect culture and nature while celebrating the space we share in the universe.

AMENITIES



Outdoor bathrooms and showers



Jungle Gym



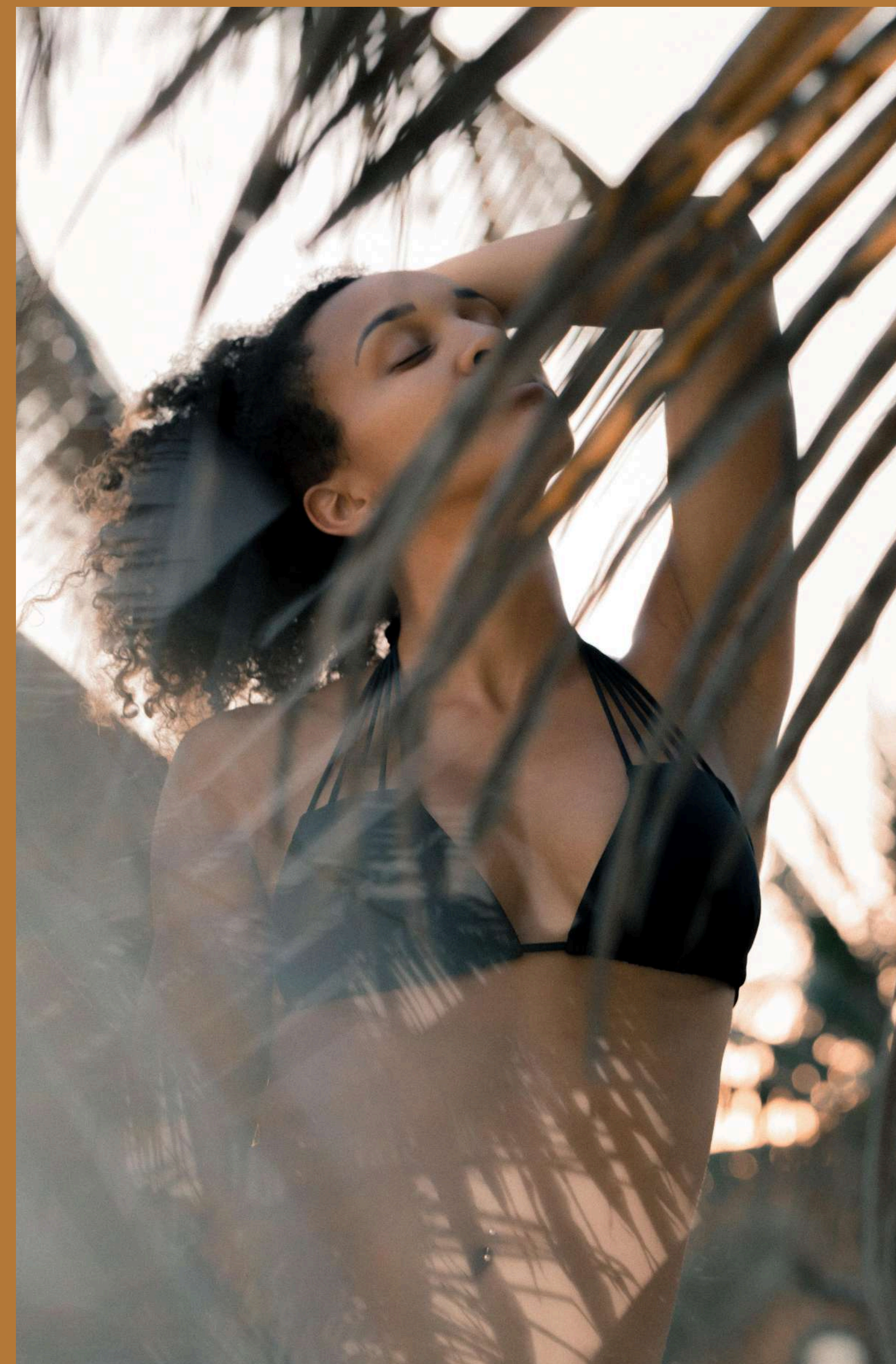
Playground



Pool



Lounge terrace with bar and kitchenette





ACCESS



CLUBHOUSE



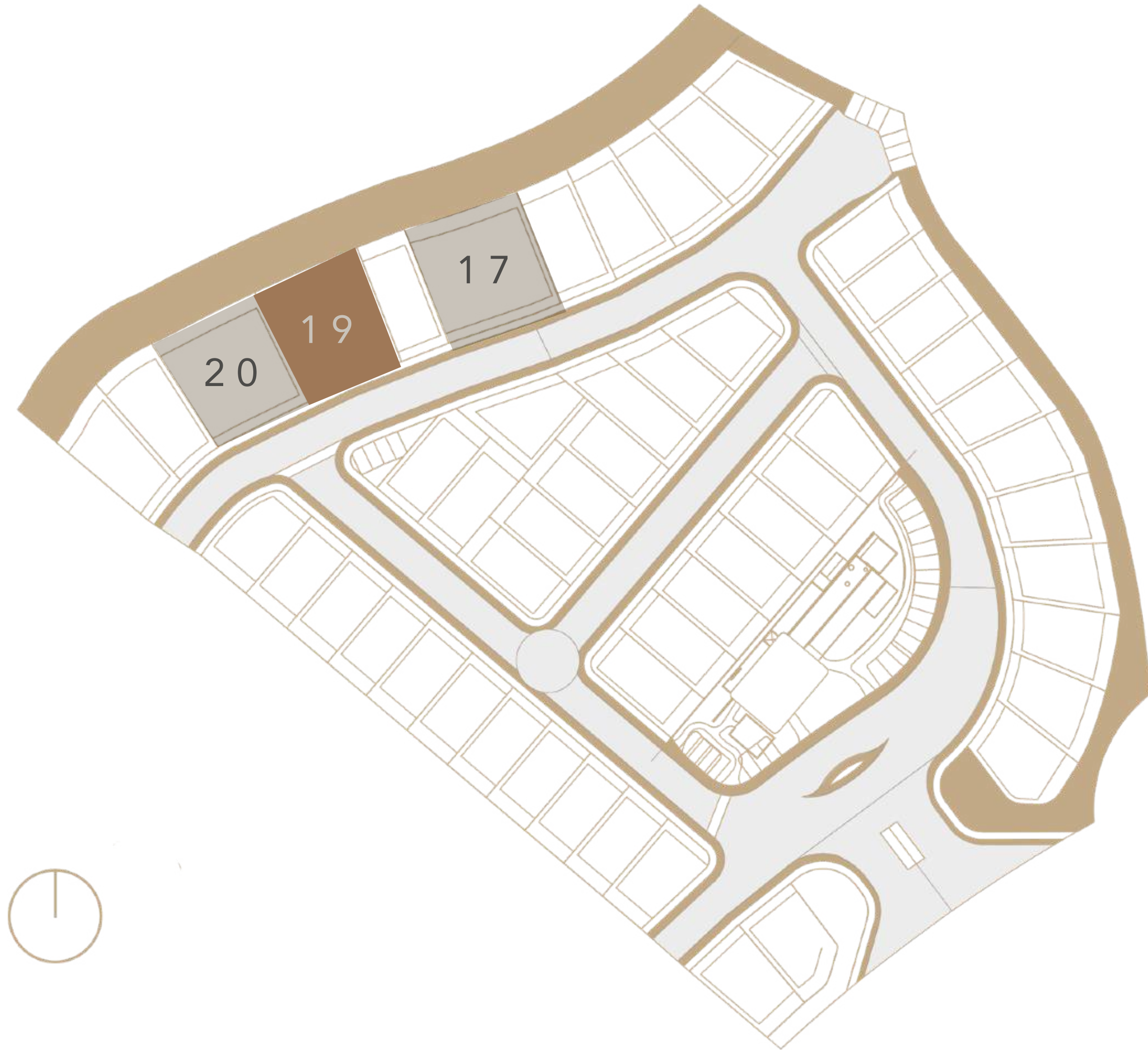
CLUBHOUSE



MASTER PLAN

LOCATION

● House 2





MÚUYAL

HOUSE 2



RESIDENCES

Múuyal's residences stand in the jungle as part of the landscape, distinguished by a bohemian style that uses clean, dark tones to create an intimate atmosphere. The space's disposition makes it fresh and daintily illuminated with natural light. Every house has a central patio in which a subtle interplay of lights creates picturesque views of the local flora. This perfect balance between nature and modernity creates a sophisticated yet cozy, home-like atmosphere.

TYPES

HOUSE 1

HOUSE 2

HOUSE 3



FRONT FACADE



REAR FACADE

BASEMENT A

- Living room
- Game room
- Machine room
- Cellar
- Bedroom with closet
- Outdoor garden

Construction
1,581.22 ft²

Garden Area
180.83 ft²



BASEMENT B

- Gym
- Game room
- Machine room
- Cellar
- Bedroom with closet
- Outdoor garden

Construction
1,581.22 ft²

Garden Area
180.83 ft²



GROUND FLOOR

- Kitchen
- Dining room
- Living room
- Laundry room
- Service bedroom
- Bedroom with closet

Construction
2,859.54 ft²

Green Areas
1,150.47 ft²

Swimming Pool
532.81 ft²

Premise
5,957.1 ft²



FIRST FLOOR

- Master bedroom
- Bedroom with walk-in closet 01
- Bedroom with walk-in closet 02
- Home office
- Balcony

Construction
2,568.38 ft²

Planter
284.17 ft²

Balcony
284.17 ft²





SWIMMING POOL



FAMILY ROOM (BASEMENT)



DINING ROOM



LIVING ROOM





BUNK BEDS



BEDROOM



MASTER BEDROOM



MASTER BEDROOM



MASTER BEDROOM WITH WALK-IN CLOSET





PAK'TE

TULUM | IBIZA |
VALENCIA | BARCELONA

DEVELOPER

PAK'TE

Pak'te means togetherness, which refers to the interaction between local communities, resources, and customs. As the name suggests, Pak'te integrates diverse elements to combine comfort, practicality, and closeness to nature. Hand in hand with local workers, Pak'te creates low-impact projects centered around respect for nature and community building.

ABOUT US

Pak'te is a company started by two businessmen based in Ibiza. After more than 25 years of independent work, they decided to join forces and develop their novel architectural vision. Their projects combine experience and innovation to create spaces inspired by nature, with sustainability as their core value.

EXPERIENCE

The heads of Pak'te have over 25 years of experience in construction, hospitality, and real estate development. They manage several companies in cities like Valencia, Ibiza, Barcelona, and Tulum.

OBJECTIVES

All of Pak'te's projects are driven by innovation and creativity, perfectly integrating design and comfort with the beauty of nature. Combining simplicity and elegance is one of the pillars of this new concept of modern life rooted in nature.



MÚUYAL

HOUSE 2



AHIMSA

TULUM, QUINTANA ROO, MEXICO